



BeadHunter

Automatic Magnetic Particle Workstation

BeadHunter™

High throughput workstation for magnetic particle-based purification and separation

The BeadHunter workstation is a standalone automatic system for nucleic acid, protein purifications, cell isolations, and many other key applications in proteomics and genomics using magnetic particles.

The BeadHunter workstation eliminates the bottleneck often caused by the sample preparation phase and is fully compatible with both standard and deep 96-well sample plates. The deck holds positions for up to 8 microplates.

The BeadHunter offers several choices for magnetic particle sample preparation. The purification can be performed in deep well plates and the purified product can be eluted into a few tens of microliters in SBS standard 96-well plates.



Magnetic particles can be recycled to the sample plate in the case of, for example, viscous samples.

Very large samples or viscous samples can be divided over multiple plates, and then re-combined in the wash-plate. Consequently, the purified product from the split will end up in same wells in the elution plate. Thus, sample size can be extended beyond the capacity of a deep well plate.

Compact size

The BeadHunter takes a small bench top area and can still provide 8 plate positions with 4 positions for accessory equipment, such as a plate shaker unit. The total width of the system is only 66 cm.

Magnet head

The magnet head processes all the wells in a 96-well sample plate simultaneously.

The tips are arranged in strips holding 8 positions each, making it very convenient to load the set needed for the whole microplate.

Strong diametrically magnetized magnets provide a large collection surface and ensure effective collection of magnetic particles.

BeadHunter is compatible with all magnetic particle chemistries.



QuickPick™ tips

The BeadHunter is utilizing QuickPick tips, which fits tightly to the magnets to minimize the dead volume introduced by the tool and for efficient collection whilst protecting the magnet.

The QuickPick tips are worldwide well proven in laboratories since several years with the handheld QuickPick tools, which are marketed and available by the Finnish Company QRET Technologies Oy.

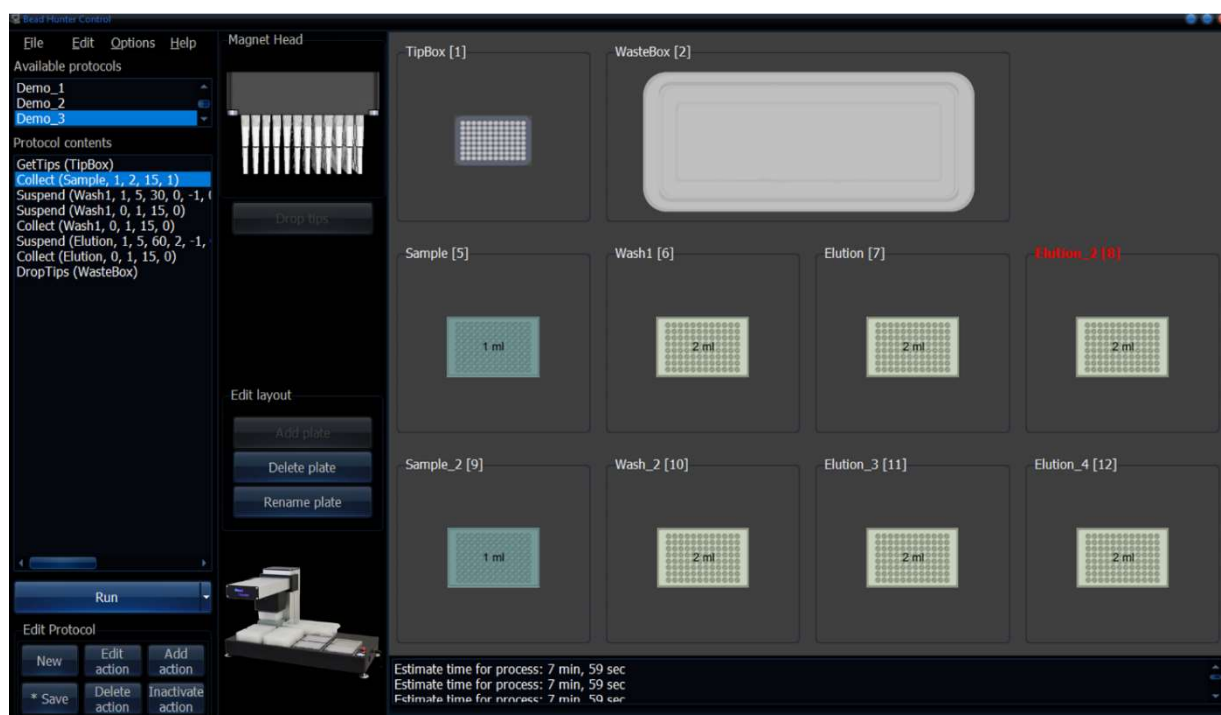
Open design

The unique open design of the BeadHunter allows customization of the workstation to support specific applications, such as a special magnet tool, or a heating/cooling plate deck for applications which demand working temperatures higher or lower than RT.

The open design also enables easy integration with third party liquid handlers, robotic arms, and other laboratory equipment.

Powerful and intuitive software

The main screen shows available protocols, action sequences and the deck layout. Just press the **Run** button and you are done!



The Windows® based touchscreen enabled software offers full programming freedom for your own applications. The software also includes ready protocols for the QuickPick™ kits. The protocols are stored as standard text files with a command language that is intuitive easy to understand.

Typical applications

Gene expression studies

- Transfection, RNAi, siRNA studies.
- Library screening ADMET.
- Proteomics applications: Pull down assays, fractionations, MALDI & ESI-MS front end solutions.

Cell isolations

- High throughput cell sorting, positive or negative fraction of 96 cell samples simultaneously.

High throughput sample preparations

- Nucleic acid and protein purifications from cells and tissues.

High throughput magnetic solid phase applications

- Immuno- and receptor assays.
- Affinity screening.

Multiplexing

- Novel assay concepts for high density array and suspension bead array automation.

Specifications

Dimensions

Length: 410 mm

Width: 660 mm

Height: 455 mm

Weight: 19,5 Kg (43 lb.)

Power consumption: 50W

Workstation deck area

The capacity of the deck can be configured for up to eight 96-well SBS standard sample plates and a position for optional accessory, e.g. plate shaker. The plate deck has fixed position for the tip loading station and tip waste box.

Certification:

Directives:

2014/35/EU Low voltage

2006/42/EC Machinery Directive

2011/65/EU Restriction of Hazardous Substances Directive (RoHS)

2015/863/EU Restriction of Hazardous Substances Directive (RoHS)

2014/30/EU Electromagnetic Compatibility Directive

Standards:

IEC 61010-1-2011

IEC 61326-1:2020

Order information

BH21-96-8 • BeadHunter with 96 magnets and 8 plate positions.

SoftProg Oy, the company

SoftProg Oy, founded 1989, is a high-tech company located in Turku, Finland. SoftProg develops and manufactures products and source components for life science and research manufacturers and laboratories.

BeadHunter is a trademark of SoftProg Oy

QuickPick is trademark of QRET Technologies Oy



WolfLabs

Pricing on any accessories shown can be found by keying the part number into the search box on our website.

The specifications listed in this brochure are subject to change by the manufacturer and therefore cannot be guaranteed to be correct. If there are aspects of the specification that must be guaranteed, please provide these to our sales team so that details can be confirmed.

www.wolflabs.co.uk

Tel : 01759 301142

Fax : 01759 301143

sales@wolflabs.co.uk

Please contact us if this literature doesn't answer all your questions.